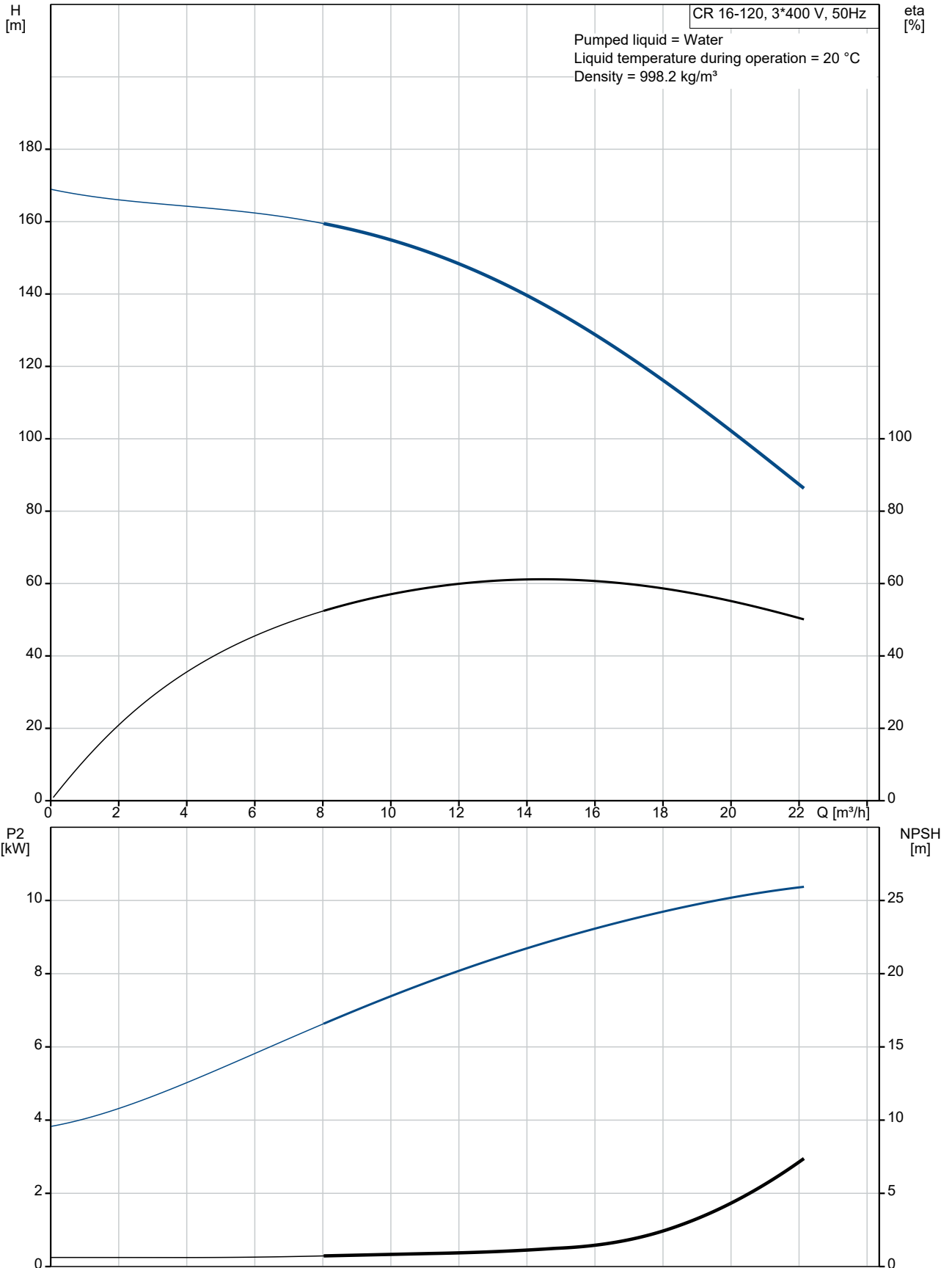
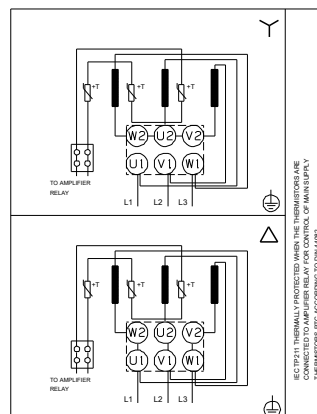
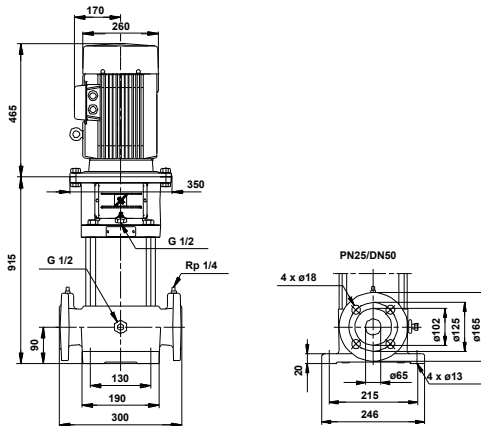
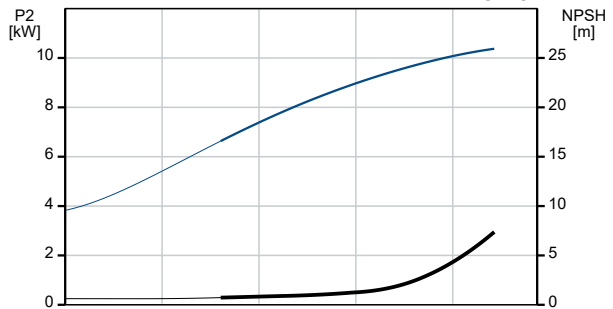
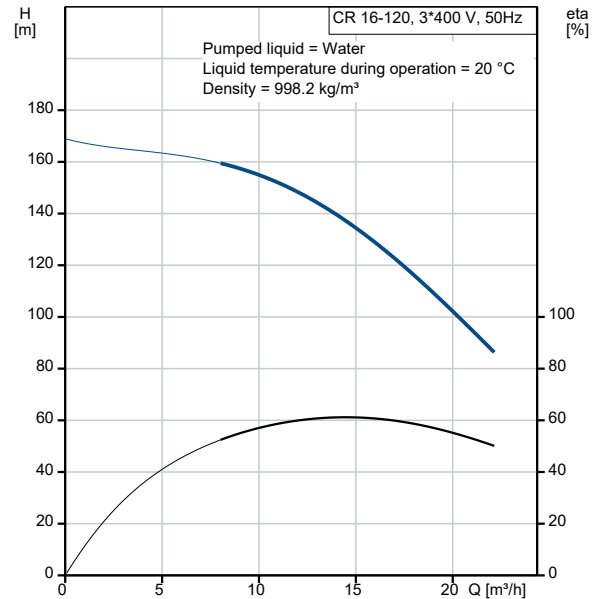


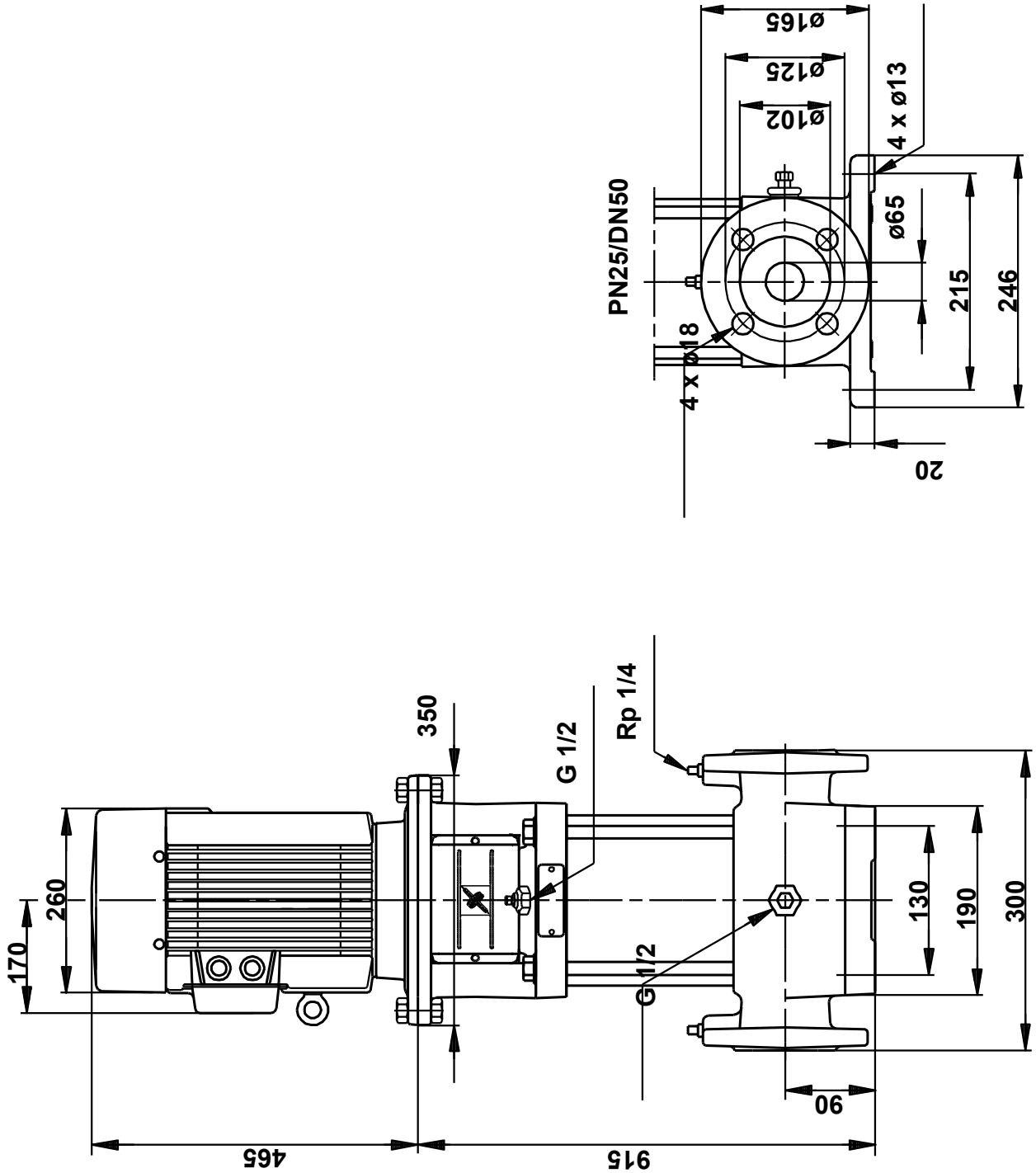
33507212 CR 16-120 A-F-A-AUUE 50 Hz



Description	Value
General information:	
Product name:	CR 16-120 A-F-A-AUUE
Product No:	33507212
EAN number:	5708601061608
Price:	
Technical:	
Pump speed on which pump data are based:	2900 rpm
Rated flow:	16 m ³ /h
Rated head:	142.2 m
Stages:	12
Impellers:	12
Low NPSH:	N
Code for shaft seal:	AUUE
Pump No:	33500012
Pump version:	A
Model:	B
Materials:	
Base:	Cast iron
Base:	EN-JL1030
Base:	25 B
Impeller:	Stainless steel
Impeller:	EN 1.4301
Impeller:	AISI 304
Material code:	A
Installation:	
t max amb:	40 °C
Max pressure at stated temp:	23 bar / 120 °C
Max pressure at stated temp:	25 bar / 85 °C
Type of connection:	DIN
Size of inlet connection:	DN 50
Pressure rating for connection:	PN 16 / PN 25
Flange size for motor:	F300
Connect code:	F
Liquid:	
Pumped liquid:	Water
Liquid temperature range:	-15 .. 120 °C
Selected liquid temperature:	20 °C
Density:	998.2 kg/m ³
Electrical data:	
Motor type:	160MB
Rated power - P2:	11 kW
Mains frequency:	50 Hz
Rated voltage:	3 x 380-415D V
Rated current:	21.4 A
Starting current:	730-810 %
Cos phi - power factor:	0.89-0.87
Rated speed:	2920-2930 rpm
Number of poles:	2
Enclosure class (IEC 34-5):	IP55
Insulation class (IEC 85):	F
Built-in motor protection:	PTC
Motor No:	85817424
Others:	
Net weight:	145 kg
Gross weight:	175 kg
Shipping volume:	0.4 m ³



33507212 CR 16-120 A-F-A-AUUE 50 Hz



Note! All units are in [mm] unless others are stated.
Disclaimer: This simplified dimensional drawing does not show all details.